



“One Company, Many Locations, Global Service”



**OVERHEAD CRANES**



# Eilbeck Cranes - Company Profile

Eilbeck built overhead cranes are sought after by many diverse industry sectors including well respected civil and industrial developers, both in Australia and around the world. Recent changes in the Global manufacturing industry have presented an opportunity for Australian manufacturing. Whereas many companies outsource everything possible to overseas suppliers, Eilbeck manufactures locally and has constantly expanded its Australian production capability – as evidenced by its new Machining Division in Sydney and new crane fabrication factory in Melbourne now in progress.

of the new high precision Machining Division, having brought to full swing production within just a few months following its inception and now undergoing further expansion to the already impressive capabilities. Eilbeck Cranes' vast experience along with its efficient and flexible approach, allows the delivery of highly customised crane solutions at competitive prices.

As a 100% Australian owned private company with over 110 years of experience and constant growth, Eilbeck Cranes has proven its sound investment and expansion decisions in order to maintain



Early 1900's - Capstan Winch transported out of the Eilbeck's factory in John St, Perth

Since its establishment by Tom Eilbeck in 1907, the company has seen three generations of Tom Eilbeck at the helm and has become an industry leader in the Australian crane market due to engineering and manufacturing excellence. The Eilbeck family's traditional attitude towards hard work has laid the foundation and sets the tone of the company. Eilbeck Cranes attracts people passionate about their professions with a strong drive to advance and excel, achieving the very best outcomes and delivering the best quality products whether it be a small or grand project. This mindset also inherited by Tom's son Charlie who now takes the lead

capacity plus ensure new and repeat business through strong relationships on both corporate and individual levels. From its manufacturing bases in Perth, Sydney and Mackay, Eilbeck Cranes is now exporting to many parts of the globe.

Complementing its in-house specialist crane design and manufacturing facilities, Eilbeck Cranes has been the sole distributor for German crane company "ABUS Crane Systems" since 1989 in Australia, New Zealand and Vietnam. Eilbeck Cranes, one of the ABUS's leading agents is also exclusive agent for Sormec Marine Cranes (Italy) and Gosan (Spain) within the region.

# Eilbeck's New range of Ex Hoists

In response to an increasing demand for quality lifting equipment for the Oil & Gas Industry, Eilbeck Cranes introduced its new line of explosion proof hoists, the ES Series. The new hoist series has been designed with modularity in mind to enable quick and precise application of the most suitable materials for onshore, offshore,

hook paths and lifting speeds incorporating FEM, ISO, AS, ATEX and IECEx Standards, the ES Hoist's modern design centered around reliability, durability and easy maintenance, which makes it a world class product yet at a competitive price. There is a wide range of realistically priced optional add on items to meet specific project



hazardous and corrosive environments. The hoists are classified in models based on their capacity and application with serial models ES20 - ES60 going up to 20t, however, the custom designed open winch model ES70 goes up to 80t and ES80 up to 160t capacity. With a robust but compact modular design offering a wide range of

requirements. These specialty hoists are manufactured by Eilbeck in their purpose built state of the art CNC machining factory. Every component and commissioning-ready product that comes out of Eilbeck's production line is tested in-house to the most stringent International Standards and project-specific requirements.



# Heavy Duty ZLK Crane

## Veolia Mechanical Biological Treatment Plant for Woodlawn



### 11 x 23m span ZLK Double Girder Overhead Travelling Crane

Group Class:	C8 (to AS1418.1)
Operation Mode:	Semi-automatic
Control:	Medford Chair
Protection Type:	IP55
Ambient Temperature:	55°C
Single Line Lift:	The rope comes straight off the drum and connects directly to grapple without reeving
Main Hoist Capacity:	11.5t (grapple mass 5.3t)
Max Payload:	6.2t (at grapple)
Mechanism Class:	M8 (to AS1418)
Lifting Speed (w/load):	40-5 m/min (1x 132kW - VSD)
Lifting Speed (no load):	60-5 m/min (grapple empty)
Crab Speed:	60-6 m/min (2x 2.2kW - VSD)
Aux. Hoist Capacity:	2.5t
Mechanism Class:	M6 (to AS1418)
Lifting Speed:	16-2.6 m/min (1x 7.4kW)
Grapple (2 off) Capacity:	8m <sup>3</sup> Orange Peel, electrical cable fed on the same drum as wire ropes



Cabin crane operator chair



Crane installation at Veolia site



Grapple attachments (one of two supplied)



# Northwest Rail Link

4 full portal cranes 48m x 20 tonnes capacity, Kellyville Precast Facility, NSW



Eilbeck Cranes manufactured 4 of 48 metre full portal cranes for Sydney's North West Rail Link project. The cranes are 12-16 metres tall with capacity of 20 tonnes designed to lift the 100,000 concrete segments used in the construction of Mega Project's tunnels. These special purpose cranes were designed and engineered with a team lead by the head engineer and managing director Tom Eilbeck.



## Joy Global

Eilbeck supplied 55 cranes to Joy Global's state of the art facility at Rutherford in the Hunter Valley, the biggest mining support and servicing facility in Australasia. The cranes range from 2t x 6 metre radius column mounted jibs through to various overhead cranes, with the largest being 3 of 75t/40t dual

hoist cranes. These cranes are fitted each with Anti-Sway technology and have the ability to be operated in tandem to facilitate the safe movement of large components in the four different bays at the facility repairing electric motors, mechanical and wheel motors, underground products and large fabrications.



40t x 6.75m ZLK crane - Epping site of the Northwest Rail Link project





# NorthConnex

## Heavy Duty Cranes for the longest road tunnel project in Australia

In total there are four shafts being sunk which are up to 100 metres deep with the overhead cranes primary role of muck removal with capacities of 50 tonnes and speeds up to 40m/min. operating 24/7 required to keep up with the massive amounts of spoil removal.

Additionally, there are auxiliary units with 100 tonnes capacity and the same height of lift which will be used to deliver and retrieve large machinery and components during the project. The largest of these cranes boasting 500kW drive motors.



The crane at Trelawney site optimised for the 57m deep shaft lifting operations with separate settings for 100t (2.5m/min) and 40t lifts (17m/min)



50(100)/10t x 29m ZLK at Southern Interchange

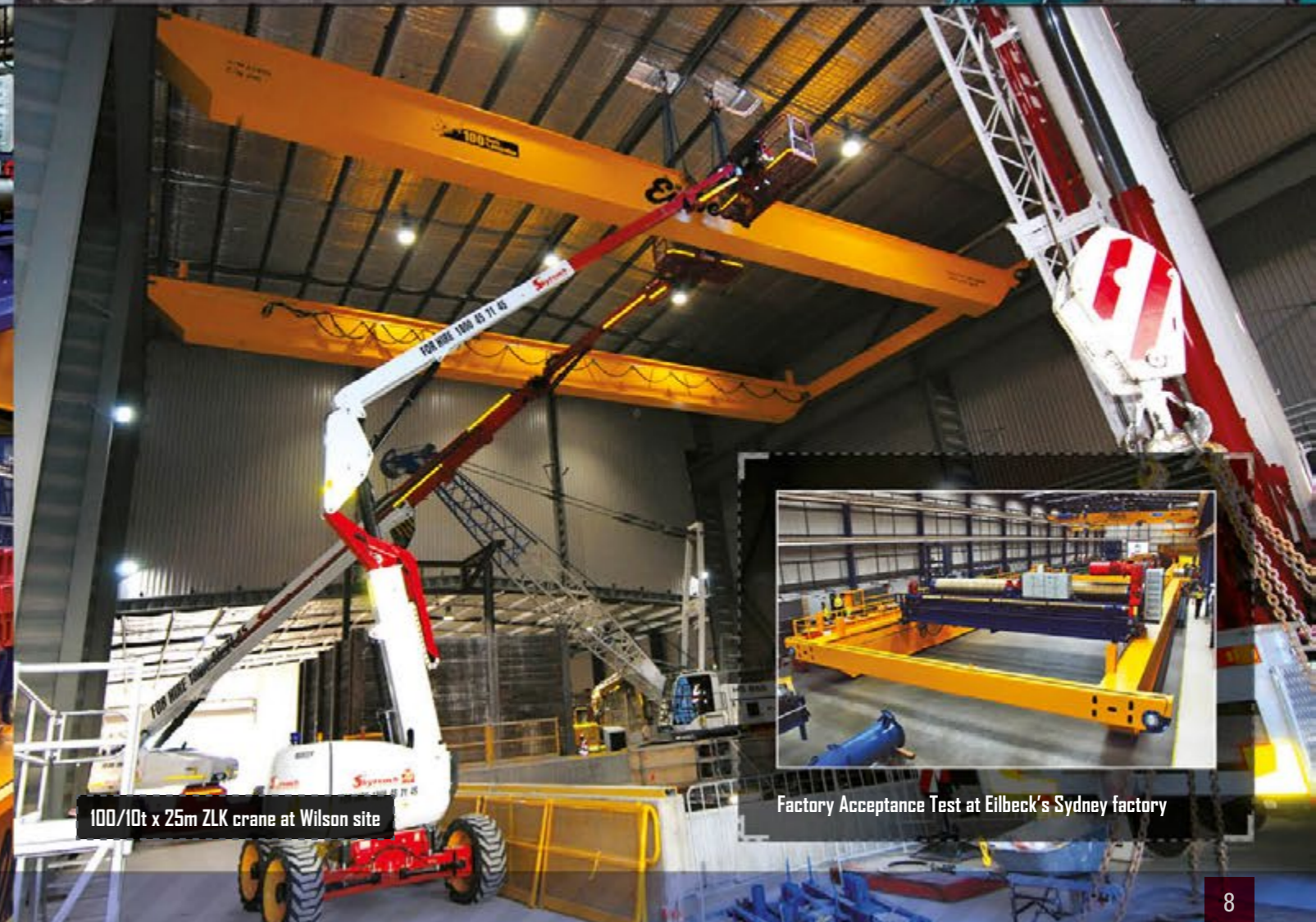
Pony Drive shifts hoist's capacity from 50t to 100t



100/10t x 17m ZLK working at Northern Interchange



Factory Acceptance Test at Eilbeck's Sydney factory



100/10t x 25m ZLK crane at Wilson site

Factory Acceptance Test at Eilbeck's Sydney factory

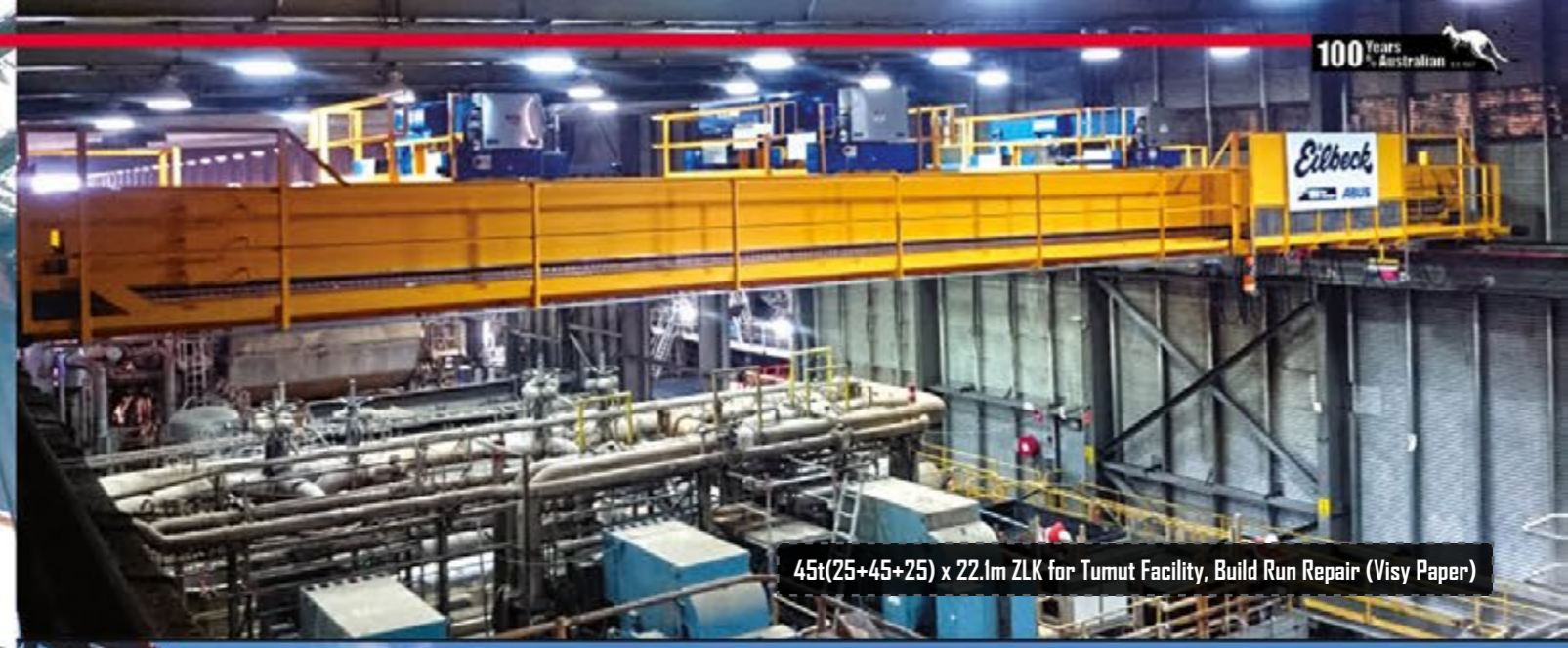




# WestConnex

CPB Contract for 5 cranes 40t to 50t

Another monster contract with CPB Dragados Samsung JV for four off 50 tonne and one 40 tonne overhead crane for the M5 West Connex project, another part of Sydney's ongoing infrastructure upgrades.



45t(25+45+25) x 22.1m ZLK for Tumut Facility, Build Run Repair (Visy Paper)



10t, 20t and 30t cranes for new BGC Precast Yard in Naval Base



30/7t x 13.5m ZLK for Nyrstar, Port Pirie. The hoist's drum was machined at Eilbeck's New Machine shop



# Automated Crane System

Rio Tinto Iron Ore Rail Capacity Enhancement Project - 7 mile upgrade



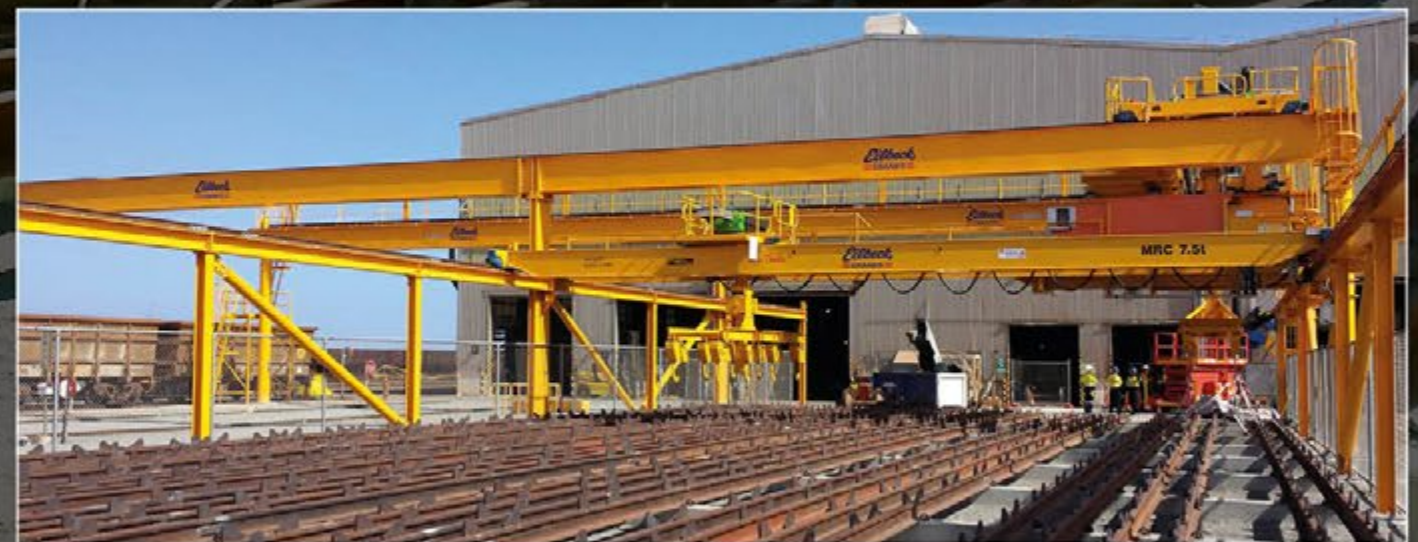
Victorian based Marand Precision Engineering approached Eilbeck for a crane based solution for the placement, storage and retrieval of rail wagon wheel sets to facilitate efficient wheel change out and maintenance of Rio Tinto's iron ore rail wagons. Located near Karratha, Western Australia, the wheel farm operates in the harsh north-west environment with extreme temperatures and storm conditions whilst maintaining reliability and availability.

The design includes unique self closing hooks for picking up to four wheel sets at one time, rapid travel speeds and anti-sway masts to ensure precision placement. Eilbeck's design scope included footings, support structure and full service access including Tractel static lines.

Once complete, these facilities will be amongst the largest automated railway workshops in the world and will be integral in improving the efficiency of Rio's rail operations.



Self closing hooks for picking up to four wheel sets



As part of Rio Tinto Iron Ore's RCE 7-Mile Project, Eilbeck Cranes has supplied three 7.5t fully automated pick and place cranes





The Roy Hill Project includes a new iron ore mine at the Roy Hill deposit, a mine process plant, a heavy haul railway system from mine to port and new port facilities at Boodarie Industrial Estate, south west of Port Hedland, Western Australia. The mine, rail and port facilities will be designed to produce 55 million tonnes per annum (Mtpa) of Hematite direct ship ore (DSD) as Lump and Fines.



## Roy Hill Iron Ore

45/5t x 43m Stscrubber Semi Portal Crane



## 20t Self-propelled Full Portal Cranes Pacific Highway Upgrade



When Acciona Ferrovial Joint Venture (Pacífico) required hard-core equipment to assist in one of the largest road infrastructure projects in NSW, the Pacific Highway upgrade between Warrell Creek and Nambucca Heads, they engaged Eilbeck Cranes to provide two special purpose 20(10+10)t self-propelled full portal cranes for the construction of highly specialised concrete bridge beams at their Macksville plant. The two cranes structures were designed and fabricated at Eilbeck's Ingleburn works. The hoists and wheel blocks were designed and manufactured in Germany by the world renowned ABUS Crane Systems. The complex integration of safety interlocks and anti-collision systems which presented themselves with their own unique set of engineering challenges were met head on by some of the brightest electrical engineers in the Australian overhead crane industry without missing a step.



# ZLK Cranes for Jandakot

## 100/12.5t & 10t ZLK Cranes Jandakot Airport Industrial Development

When global oilfield provider of engineered services and products to the offshore oil and gas industry Oceaneering Australia Pty Ltd made the decision to consolidate its fragmented Perth operations into one facility, they chose Eilbeck Cranes to provide the 2 x 10 Tonne and 100 Tonne overhead travelling cranes. Eilbeck worked closely with the builder PS Structures and project managers Insight Project Services (IPS) to facilitate a seamless integration of

the overhead cranes into the new buildings as construction progressed culminating with the load test and commissioning of the 100T/12T x 18.25, 11.43m lift height Eilbeck/Abus crane using water bags as test weights. The new complex has been developed through Lessor Jandakot Airport Holdings for which Eilbeck Cranes is preferred supplier having already supplied cranes into several other new buildings in the Jandakot Airport Industrial Development.



100t load test with water bags as test weights



# 120t Automotive Terminal Crane

120t x 10m Full Portal Crane for the Port of Melbourne Webb Dock



Load testing at the Webb Dock West Automotive Terminal



# Curtis Island LNG Project

Eilbeck Cranes designed and manufactured these cranes using high quality ABUS hoists. The free standing gantries are tied to traveller beams used to lift 70t modules of LNG pipe line system into place on ship loading jetty. Each lift use 4 fully synchronised hoists. QCLNG "Pipe Rack Gantry" were designed to be interchangeable with APLNG using additional bolt holes and extension pieces.



140(50/50/50/50)t Free-standing Gantry Cranes



120t ABUS hoist 10/2 reeving



75t x 25m Full Portal Double Girder cranes - Quickcell Technology Products, QLD





# 10t Circular Crane with Cantilever

## BHP Olympic Dam - Cranes for the Slag Furnace Rebuild Project

When client BHP Billiton wanted to utilise temporary special construction cranes for their Electric Slag Furnace Rebuild (ESFR) at Olympic Dam Mine Site (SA) they turned to Eilbeck Cranes and both worked closely together to bring to light a bespoke engineered solution for this special application.

The temporary construction cranes were planned to be used for the ESFR Major Shutdown (MSD) at the Olympic Dam facility. The requirement was for the temporary construction cranes to be specifically designed 'fit-for-purpose', fabricated, tested and commissioned to meet the construction requirements of the ESFR strict standards whilst complying with Australian and key BHP Billiton Standards.

The Scope comprised the supply of several crane, of which two were specifically designed and built for the ESFR:

ESFR-01: Transfer Crane - 10t  
 ESFR-02: Circular Crane - 10(5+5)t

The ESFR-01 (Transfer Crane) primary operation is the removal of slag launders (and associated spill trays) to create a lift corridor ('lift well'), support furnace demolition and new shell installation. The requirement was for the hook to extend 1 metre beyond the Transfer Crane monorail beam end stop, to enable 'place and pick' transfers with ESFR-02.

The hoist needed to be fixed in position to the trolley with the hook located at a maximum of 150 from the end of the trolley. As a result, the design of the Transfer Crane was a Cathead Hoist design.

The ESFR-02 (Circular Crane) primary operation is to be used for shell demolition shell construction and Composite Furnace Module (CFM) installation. This special crane consisted of a circular (closed) monorail system, where the crane end carriages travel on the circumferential direction for infinite rotations. The crane has two radial girders, where two cathead hoists (5t each) run. The cathead hoist

has the ability to be extended (cantilevered) beyond the circumference of the circular monorail, in the same manner of ESFR-01. Cathead hoists can be operated independently or synchronised. The centre line diameter of circular monorail is 11.08m, and it had to be divided into sections for ease of handling and installation on site.

The assembly and erection plan of the circular monorail had to be engineered in a very specific way in order to be executed safely and efficiently on site. Many geometrical and positional constraints had to be dealt with in order for the complete system to fit in the very tight available space, and function properly. The cathead hoists are to travel together circumferentially (long travel of the crane) and travel both independently and synchronised in the radial direction (cross travel).

The hoists needed be able to lift independently and synchronised.



End carriages circumferential direction of travel



Hoists travel synchronously while maintaining 10(5+5)t MRC and independently maintaining 5t MRC each





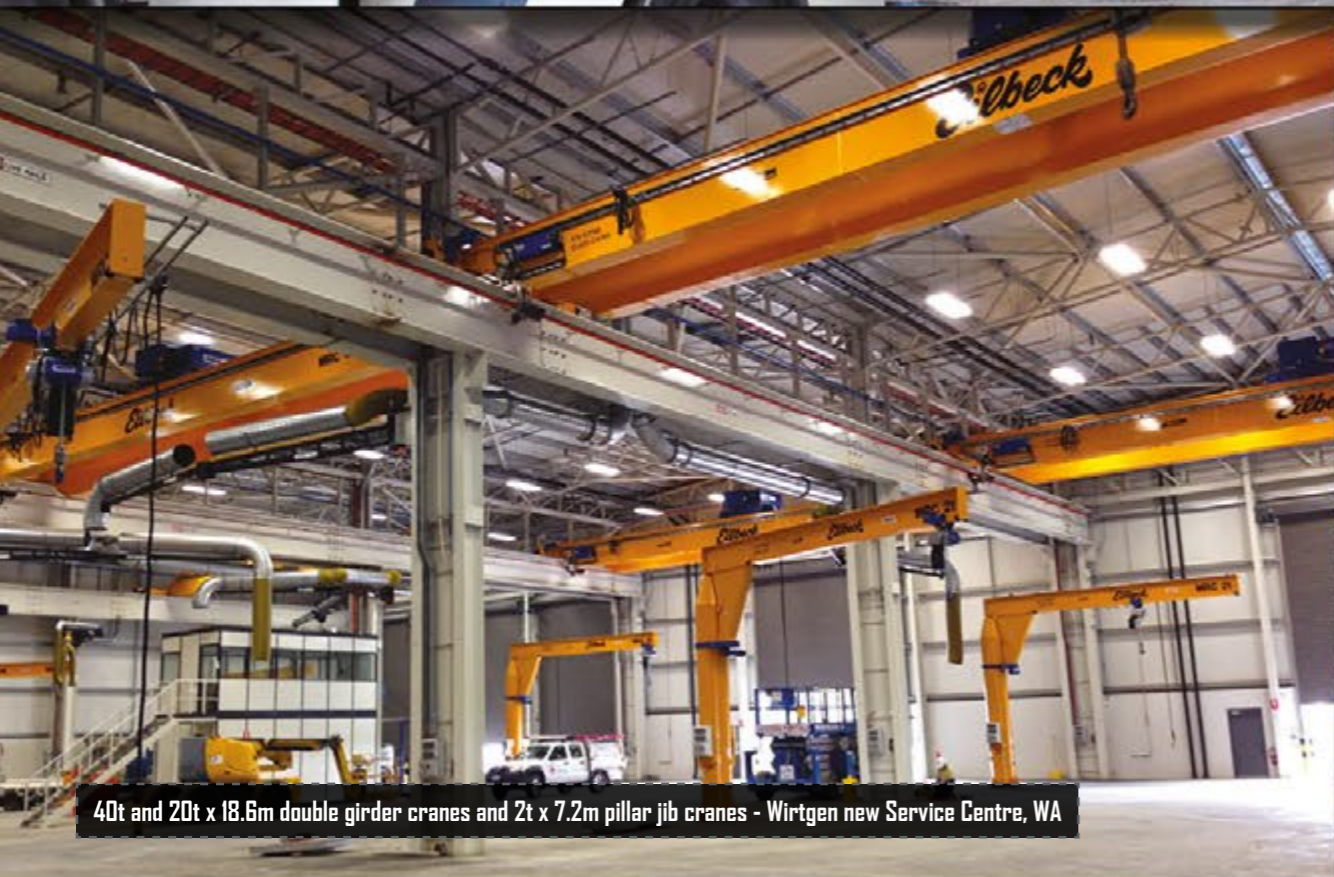
# 52.6m Spliced EDL Girder Crane

Sikorsky Airbase - Maintenance & Logistics Facility

Yerriyong Airbase has a brand new Eilbeck's 5t crane of 52.6m long spliced girder running across the hangar. Each part of this underslung crane girder was lifted up separately and joined once hung from the runway. Installation went smoothly and was completed before schedule despite plenty of other work at the site being carried out at the same time.



50t x 18m custom designed ZLK crane, BAE Engineering and Solar, Mackay QLD



40t and 20t x 18.6m double girder cranes and 2t x 7.2m pillar jib cranes - Wirtgen new Service Centre, WA



4 of 10(5+5)t x 30m and 5(2.5+2.5)t x 30m single girder cranes, Pelligra Holdings, VIC





Eilbeck Cranes - Australia  
 ABN: 22 295 128 214 ACN: 008 973 662  
 T.Eilbeck & Son Pty Ltd T/F The Eilbeck Unit Trust  
[www.eilbeckcranes.com](http://www.eilbeckcranes.com)

**Perth – Manufacturing**  
 28 Jackson Street  
 Bassendean, WA 6054  
 Phone: 61 (08) 9279 4800  
 Fax: 61 (08) 9378 3689  
 Email: [perth@eilbeckcranes.com](mailto:perth@eilbeckcranes.com)

**Perth – Manufacturing**  
 11 Yelland Way  
 Bassendean, WA 6054  
 Phone: 61 (08) 9379 3724  
 Fax: 61 (08) 9378 3689  
 Email: [perth@eilbeckcranes.com](mailto:perth@eilbeckcranes.com)

**Perth – Service / Testing**  
 14 Yelland Way  
 Bassendean, WA 6054  
 Phone: 61 (08) 9379 3724  
 Fax: 61 (08) 9378 3689  
 Email: [perthservice@eilbeckcranes.com](mailto:perthservice@eilbeckcranes.com)

**Tom Price – Service**  
 Lot 27b Mine Road  
 Tom Price, WA 6751  
 Phone: 61 (08) 9279 4800  
 Fax: 61 (08) 9378 3689  
 Email: [tomprice@eilbeckcranes.com](mailto:tomprice@eilbeckcranes.com)

**Karratha – Service**  
 Unit 3 / 4 Crane Circle  
 Karratha, WA 6714  
 Phone: 0407 208 025  
 Fax: 61 (08) 9185 4801  
 Email: [karratha@eilbeckcranes.com](mailto:karratha@eilbeckcranes.com)

**Darwin – Service**  
 Phone: 61 (07) 3376 8255  
 Fax: 61 (07) 3376 1255  
 Email: [darwin@eilbeckcranes.com](mailto:darwin@eilbeckcranes.com)

**Sydney – Manufacturing**  
 6 Moorlands Road  
 Ingleburn, NSW 2565  
 Phone: 61 (02) 9829 3700  
 Fax: 61 (02) 9829 3500  
 Email: [sydney@eilbeckcranes.com](mailto:sydney@eilbeckcranes.com)

**Sydney – Service / Winches / Machining**  
 53 Lancaster Street  
 Ingleburn, NSW 2565  
 Phone: 61 (02) 9618 1904  
 Fax: 61 (02) 9605 5171  
 Email: [sydneysevice@eilbeckcranes.com](mailto:sydneysevice@eilbeckcranes.com)

**Newcastle – Service**  
 1 / 50 Sandringham Ave  
 Thornton, NSW 2322  
 Phone: 61 (02) 4966 8022  
 Fax: 61 (02) 4964 2285  
 Email: [newcastle@eilbeckcranes.com](mailto:newcastle@eilbeckcranes.com)

**Mackay – Manufacturing / Service**  
 32 Diesel Drive  
 Paget, QLD 4740  
 Phone: 61 (07) 4998 5599  
 Fax: 61 (07) 4998 5756  
 Email: [mackay@eilbeckcranes.com](mailto:mackay@eilbeckcranes.com)

**Brisbane – Service**  
 Unit 3 / 12 Sudbury Street  
 Darra, QLD 4076  
 Phone: 61 (07) 3376 8255  
 Fax: 61 (07) 3376 1255  
 Email: [brisbane@eilbeckcranes.com](mailto:brisbane@eilbeckcranes.com)

**Melbourne – Service**  
 Unit 3A / 1 Leo Court  
 Derrimut, VIC 3030  
 Phone: 61 (03) 8353 2444  
 Fax: 61 (03) 8353 2456  
 Email: [melbourne@eilbeckcranes.com](mailto:melbourne@eilbeckcranes.com)

**Adelaide – Service**  
 Unit 3 / 132-134 Port Wakefield Rd  
 Cavan, SA 5094  
 Ph: 61 (08) 8162 5150  
 Fax: 61 (08) 8162 5160  
 Email: [adelaide@eilbeckcranes.com](mailto:adelaide@eilbeckcranes.com)

**New Zealand – Baker Cranes**  
[www.bakercranes.co.nz](http://www.bakercranes.co.nz)  
 10 Aerovista Place  
 Wiri Auckland 2150  
 Phone: 64 (9) 277 0736  
 Fax: 64 (9) 277 0735  
 Email: [newzealand@eilbeckcranes.com](mailto:newzealand@eilbeckcranes.com)

**Netherlands – Van Leusden B.V.**  
 Parelhoeweg 2  
 NL - 4791 PA Klundert  
 Havennummer 457A  
 The Netherlands  
 Phone: 31 168 385 225  
 Fax: 31 168 385 230  
 Email: [info@vanleusden.com](mailto:info@vanleusden.com)

**Vietnam – AVC**  
 206 Road Lac Hong Commune  
 Van Lam District  
 Hung Yen Province Hanoi  
 Vietnam  
 Phone: 84 321 3980 410  
 Fax: 84 321 3980 411  
 Email: [vietnam@eilbeckcranes.com](mailto:vietnam@eilbeckcranes.com)

