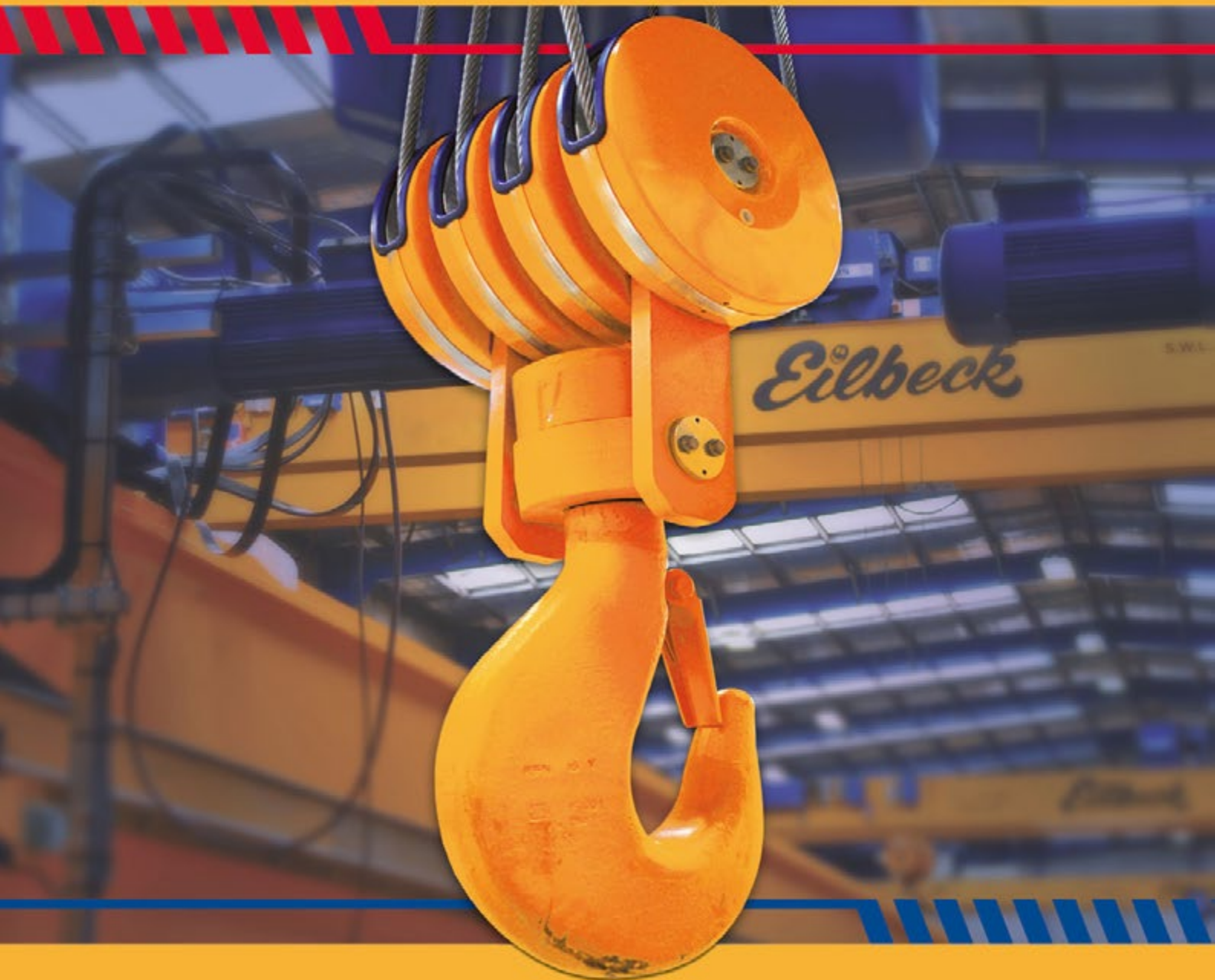


Eilbeck

CRANES

“ONE COMPANY, MANY LOCATIONS, GLOBAL SERVICE”

100 Years
% Australian Est. 1907



OVERHEAD CRANES

EILBECK HISTORY..... 1 - 2

SINGLE GIRDER TRAVELLING CRANES..... 3 - 4

DOUBLE GIRDER TRAVELLING CRANES..... 5 - 10

CRANE INSTALLATION..... 11 - 12

PORTAL & SEMI-PORTAL TRAVELLING CRANES..... 13 - 17

UNDERSLUNG TRAVELLING CRANES..... 18

JIB CRANES..... 19 - 22

LIFTING BEAMS..... 23 - 24

EXPLOSION PROTECTION..... 25 - 26

LIQUEFIED NATURAL GAS SOLUTION - THE TANK HOIST..... 26

EXPLOSION PROTECTED CRANES..... 27 - 30

LUFFING CRANES..... 31 - 32

CRANE MANUFACTURING..... 33 - 34

CRANE TRANSPORTATION..... 35 - 36

CRANE SERVICE..... 37 - 38

“A Passion for Excellence”

The Eilbeck family have Engineering in their blood, going back four generations to the first Tom Eilbeck, who arrived in Western Australia in 1892 from Cumberland England. He was one of the first graduates of the University of Western Australia. In 1907 Tom Eilbeck went on to becoming the founder of T. Eilbeck and Son Limited, later becoming a distinguished business man, not only recognised for his excellence in Engineering but also for his political and business influence.

Today, current Managing Director of Eilbeck Cranes, Tom Eilbeck grandson of founder shares not only the same name but possesses an equal drive for Engineering excellence and innovation. Traditional family values such as hard work and determination are not used as punch lines but rather have been foundation blocks in the history of this family’s Enterprise - Eilbeck Cranes. Today Eilbeck Cranes is proud to run six manufacturing plants in Perth, Sydney and Mackay, with service outlets spread throughout Australia.

Eilbeck Cranes has made its mark both nationally and internationally, as the only organisation to provide a serious challenge to the traditional European domination within the Crane Industry. Indeed, Eilbeck Cranes tower over the Australian market place with a winning share of the local market, and are proud to be recognised a serious contender in the international scale.

The global recognition has been hard won against international engineering firms with far greater financial resources and in theory, far greater access to human expertise. Yet still, Eilbeck Cranes has successfully launched a new line of product - Eilbeck Winches. Within only 2 years from conception, Eilbeck Winches - a division of Eilbeck Cranes, has taken on the challenge head on and successfully established itself as market leader in the Winch Industry. From opening

its doors in 2011, to currently manufacturing over 200 winches per year, the Eilbeck dynasty has proven itself over and over again.

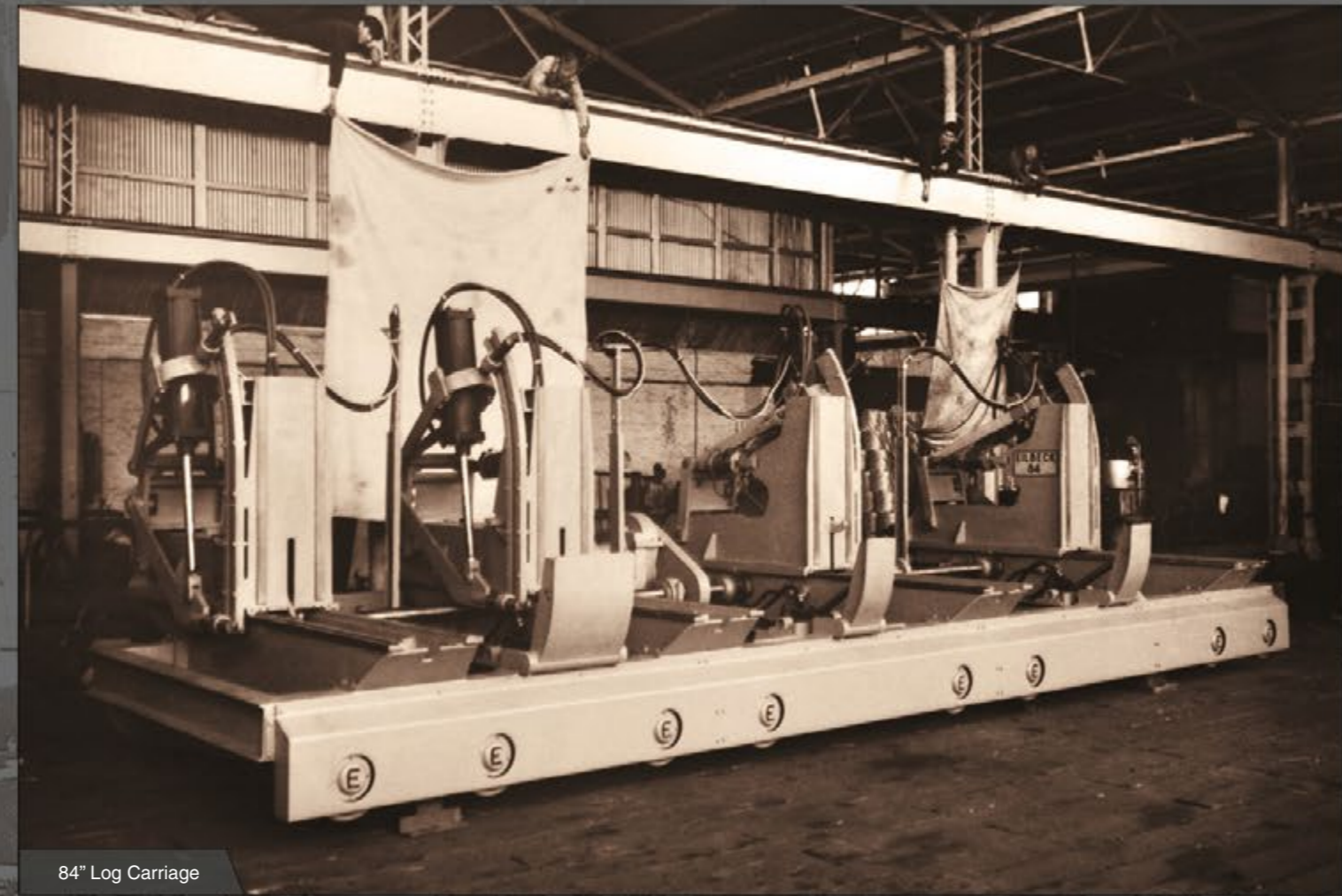
The Eilbeck Cranes’ story has all the ingredients to be regarded as Australia’s greatest crane company; from its history, a devoted sales team, an innovative engineering team, strong management team, and precision shop floor fabrication team, they all share the same core values.

“What sets us apart is our people who unquestionably are our greatest asset.”

Tom Eilbeck



April-Louise, Tom and Charlie Eilbeck



84" Log Carriage



Log Rotator & Loader

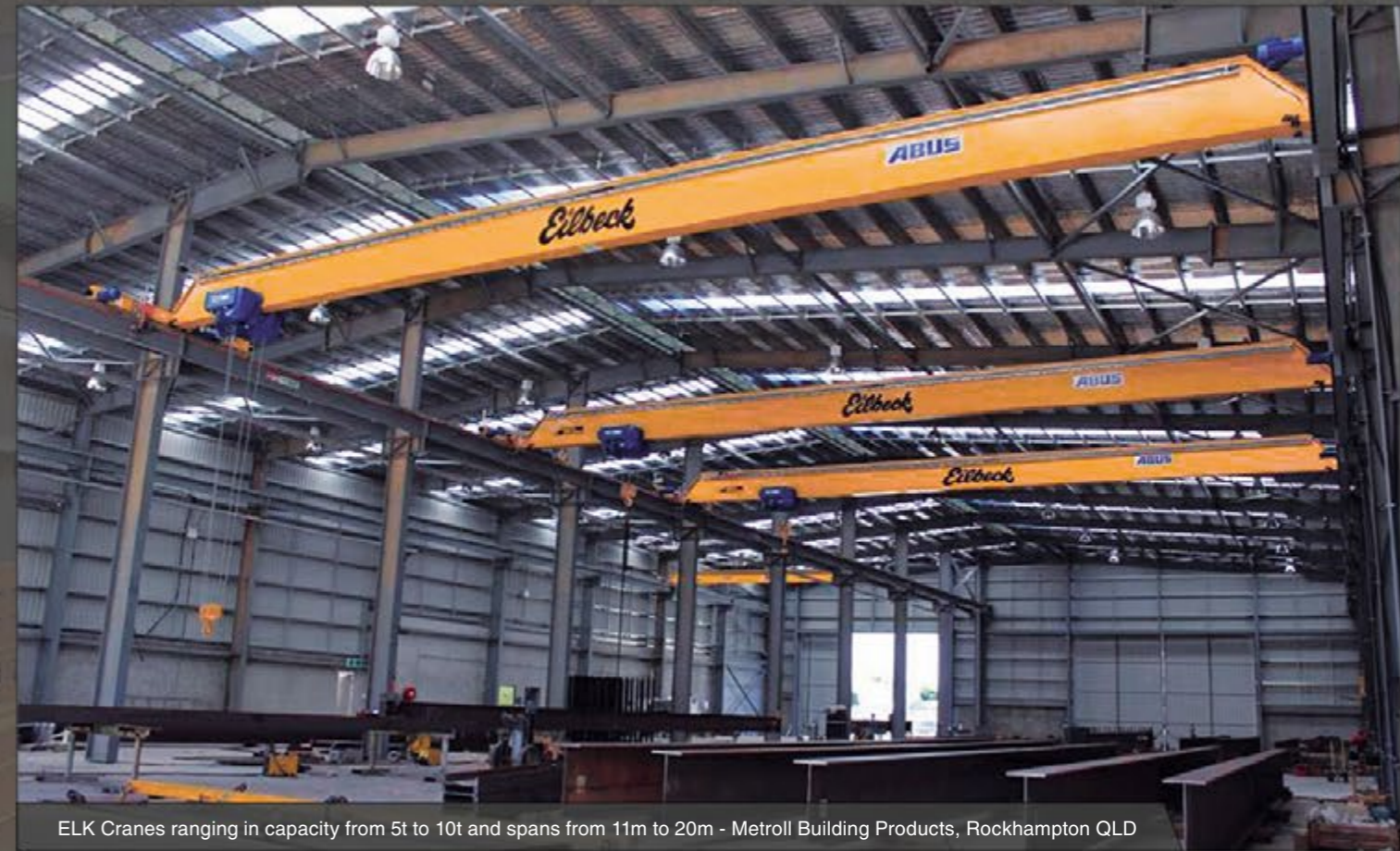
“Eilbeck Cranes - the Leading Australian Crane Manufacturer”



20t x 20m ELK Cranes working in tandem - Clorox Australia, Padstow, Western Sydney

New gantry cranes have significantly improved container flow at Clorox Australia. The main objective for this project was to optimise container movements around the receiving docks, to increase productivity, improve traffic flow and ensure a safe working environment. The key to achieving these aims was the installation of state-of-the-art gantry cranes to handle containers, replacing the existing side loaders. Containers can now be picked up and put on a loading pad and empty containers can be returned to trucks in one operation. Before

installation of the two 20t gantry cranes operating in tandem by remote control, the docks relied on a side loader that moved containers on to a separate roadway for pick-up. It was not a safe operation, it also meant the high cost of a side-loader to be on site full-time. The installed cranes ensure a very smooth operation, with a very quick turnaround of containers in and out. Trucks are never waiting. The new supply chain procedures have not only resulted in savings all round, but have also improved efficiency and productivity.



ELK Cranes ranging in capacity from 5t to 10t and spans from 11m to 20m - Metroll Building Products, Rockhampton QLD

Eilbeck Cranes successfully manufactured and installed 9 off single girder cranes ranging in capacity from 5t through to 10t. Having used Eilbeck's cranes for several years now whilst occupying a building with another of Eilbeck's loyal customers, Metroll Building Products, The Engineering Company invested in Eilbeck to continue providing our equipment and services when they decided to expand and move into a premises of their own. The new workshop is earmarked to provide a variety of fabrication,

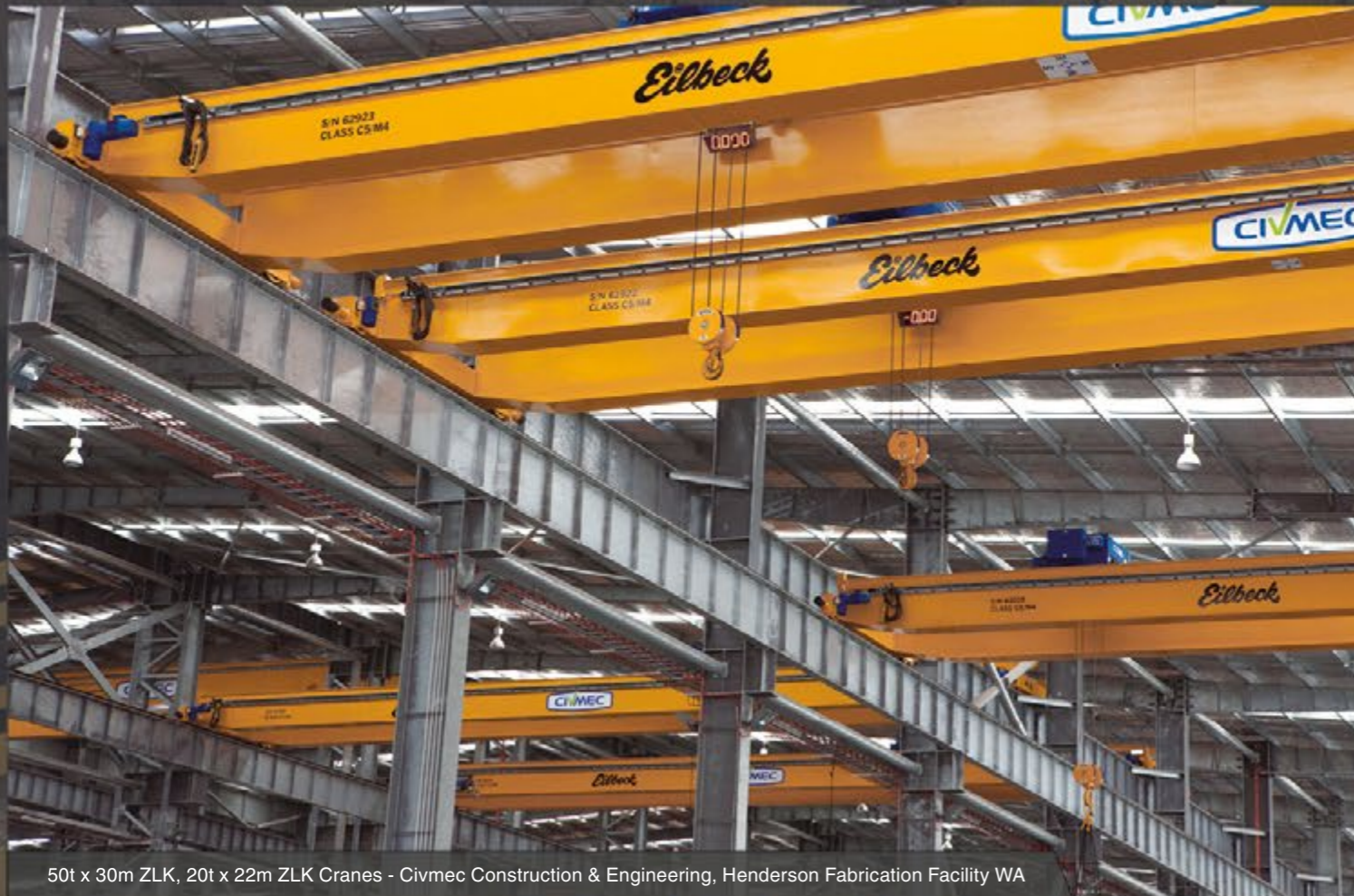
machining and installation projects to the Rockhampton and surrounding areas. The cranes procured were designed to meet their needs in these engineering fields and the project was carried out and managed successfully, working with the client to deliver and install when they needed and around their operation with minimal interruption. Ongoing after sales support and services will be continued to be provided by Eilbeck's service division established in Mackay.



16t x 18.9m ELK Cranes - Diverse Tank Engineering, Lot 508 Factory Facility, Henderson WA



12.5t x 26.5m ELK Crane - East Coast Steel, Ingleburn NSW



50t x 30m ZLK, 20t x 22m ZLK Cranes - Civmec Construction & Engineering, Henderson Fabrication Facility WA

Four girders are simply stronger than one, making double girder travelling cranes the ideal solution for the area coverage handling of heavy loads up to 200 tonnes with 4 x 50 tonnes in standard applications. These units are available with a number of main girder connection versions to best suit new or existing buildings and the best in functionality, versatility and convenience. In addition, this range includes a wide variety of accessories for many different special applications. ZLK double girder cranes feature welded box beams.

All the sections used for main girders and end carriages are computer optimised for high performance and low weight, benefits that pay in terms of strength and cost efficiency.

Double girder travelling cranes are available for spans of up to 40m for standard applications and feature the versatility needed for special requirements. For example, higher crane travel speeds, service platforms, trolleys with walkways and auxiliary hoists are all features that can easily be implemented.



Eilbeck supplied 22 ELK & ZLK Cranes that have been engineered to service the diversity of work the new Civmec facility is capable of producing



High speed 40t x 15.3m & 25t x 15.3m ZLK Cranes - Thiess, City East Cable Tunnel Project, Sydney

Thiess approached Eilbeck Cranes to revitalise a C5M4 25t double girder crane that had previously seen action on many famous landmark projects like the Chatswood to Epping rail tunnel project.

Our dedicated specialist team set out to inspect, repair and recertify the crane to its full operating capacity. This was achieved well within budget and on time.

Also required was a brand new high performance C5M5 40t high speed double girder crane to be used to assemble the TBM (tunnel boring machine) and mucking out duties for the duration of the project. Eilbeck supplied an ABUS 40t hoist fully designed and manufactured in Germany using state of the art inverter technology to achieve full load speed in excess of 10.7 meters per minute and fully proportional to a no load speed of 24.7 meters per minute.

The special high performance hoist with its 4 hoist brakes and heavy duty wire rope was also fully customised by Eilbeck in-house electrical engineering team. The crane received a Cat 4 safety circuit and Cat 4 radio control system to enable man riding capabilities just to add to the plethora of unique features of this crane without compromising the simple off the shelf approach to the equipment supplied ensuring reliability.

Eilbeck Cranes have a long history with tunnel boring projects Australia wide and have a reputation of delivering very reliable equipment in the form of the ABUS product which in this project alone shows that even after 10 years exposure in the very demanding construction and tunnel boring industries Eilbeck is a supplier of high performance equipment capable of passing toughest tests.

“High Quality and Precision right down to the Smallest Component”



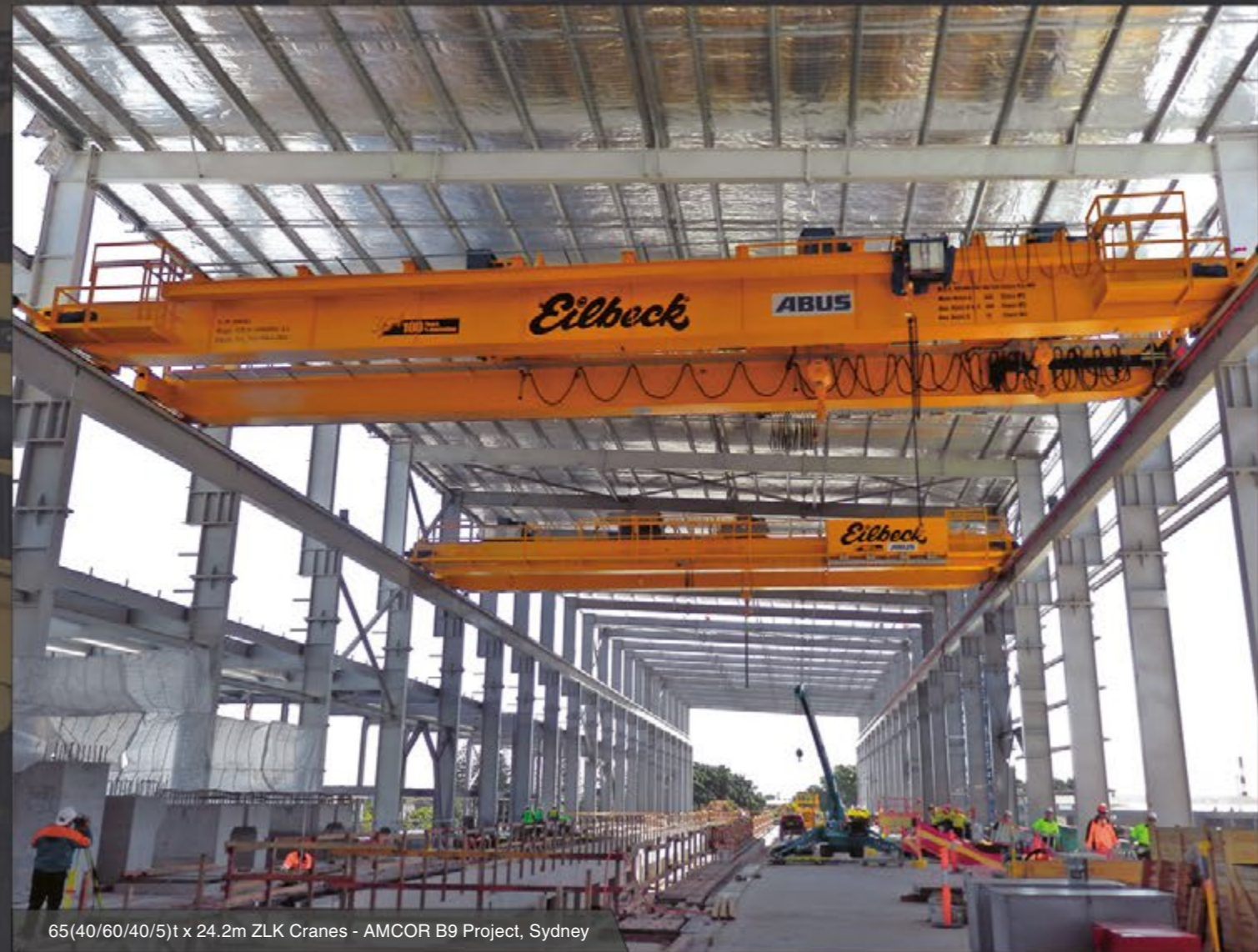
30/5t x 33.4m ZLK Crane with spliced girder plates - Hutchinson Builders, Groote Eylandt NT

This special double girder overhead crane has got the new design for the spliced joint which is another Eilbeck Design Team innovation. 33m crane beams were spliced into 3 sections to get it on the barge

to take the crane to Groote Eylandt from Darwin Port. The crane has special indicator lights on both hoists to show the percentage of loading during operation. Shown during installation.



50/10t x 16m ZLK Crane - Austin Engineering, Muswellbrook NSW



65(40/60/40/5)t x 24.2m ZLK Cranes - AMCOR B9 Project, Sydney

AMCOR has chosen Eilbeck Cranes for their new state-of-the-art paper mill building at Botany, Sydney which is worth \$1.4 billion. The cranes have load summing capacity of 65t with 4 hoists on board. This enables the operators to use any of the 3 hoists at any time to reach 65t maximum rated capacity. A very special feature on these

cranes is the Symeo system that keeps the cranes apart from each other 7.5 meters in the long travel path of 320 meters via contactless radio waves between two cranes. The cranes are supplied with a 65t capacity 360 degree rotating beam which enables operators to lift paper rolls with 2 x 40t hoists.



32(16+16)t x 17.4m ZLK Crane installation - Melco Engineering, Paget QLD



40t x 13m ZLK Crane servicing the Fixed Plant - BHP Billiton, Yandi mine site in Pilbara WA

BHP Billiton Yandi Rapid Growth Project 5

Design, supply & installation for 60/5t double girder crane and a 40t double girder crane for the extension of the existing ore handling facilities of Yandi at the Pilbara WA. Due to our flexibility and large experience on design and fabrication, this allowed us to supply to

our client customised structural, mechanical and electrical solutions, meeting all Australian Standards and client specifications i.e. the special electro-mechanical requirements. One more time Eilbeck Cranes was the preferred supplier for the mining industry.



40t x 19m ZLK Crane - Komatsu Wacol Mining Workshop QLD

Komatsu Australia's newest facility in Wacol is an impressive facility which has been hastily filled in a short space of time since its grand opening in March 2012. From graders to excavators, dump trucks to dozers the equipment is assembled new or rebuilt where required in one of the 6 individual complexes established on the 61,000m² site. Eilbeck Cranes manufactured and installed 16 new high class overhead gantry cranes during the construction phase of the new Komatsu site. The overhead gantry cranes were custom built in Eilbeck's manufacturing facility in Mackay, Queensland.

The cranes supplied span a wide range of sizes, from single girder 5t cranes to double girder 40t overhead cranes. Each crane design offering a customised crane solution required for the individual departments within Komatsu's Manufacturing, Reman and Fabrication Facilities. From the German built ABUS hoists and electrics package, load displays, VSD drives, remote radio controls, master/slave systems and dual hoist arrangements each crane is constructed to precise specifications which meet and/or exceed all relevant Australian Standards and customer requirements.



60/5t x 18m ZLK Crane servicing five Vehicle Bays and Boiler Making Bay of the Mobile Equipment Maintenance Workshop - Pilbara WA



20t x 19m ELK Crane - Komatsu Wacol Main Workshop QLD

**“Complex Installations...
We do it the Smart Way!”**



35/5t x 23.6m ZLK Crane installation - Thiess, Daunia Mine QLD



100(50+50)t x 19m ZLK Crane installation - Melco Engineering, Mackay QLD



40/5t x 19.9m ZLK Crane installation - Taylor Constructions, 16 KSG Workshop at Titanium Drive, Mackay QLD



20/5t x 26m ZLK Crane - Xstrata Coal, Bulga Mine NSW

Eilbeck Cranes supplies the first of two overhead cranes for Xstrata Coal at Bulga. We were selected to supply replacement cranes for Xstrata's Bulga Coal, Coal Washery Facility. The crane was delivered

to site fully assembled and installed using a 300t mobile crane. All coal washery cranes Eilbeck supplied are fitted with stainless steel accessories and a diamond bar catenary as standard.

**“Lifting, Lowering, Area Coverage
Eilbeck Cranes will Deliver!”**



20(10+10)t x 20m SPELK Crane - Cvmec, Henderson Fabrication Facility WA



30(15+15)t x 15.8m FPELK Crane - Cvmec, Henderson Fabrication Facility WA

Eilbeck Cranes is proud to have supplied 22 electric overhead travelling cranes for the new Cvmec workshop. The cranes have been engineered to service the diversity of work the new facility is capable of producing. Among Australia's largest crane manufacturers with factories in Perth, Sydney and Mackay, Eilbeck has the capacity to

design, fabricate, install and commission cranes fit for purpose. As the agent for ABUS Crane Systems (Germany), Eilbeck's cranes are fitted with quality European electromechanical components. In addition to fabrication facilities like Cvmec, Eilbeck Cranes supplies cranes to oil and gas, Mining and processing industries throughout Australasia.



30(15+15)t x 15.8m FPELK Crane - Cvmec, Henderson Fabrication Facility WA



60/10t x 21.4m SPZLK Crane - CS Energy, Mount Isa QLD



16t x 18.3m FPZLK Cranes - ETSA Utilities, Angle Park SA

ETSA Utilities is the monopoly electricity distribution and retail business servicing South Australia and is responsible for constructing, connecting and maintaining electricity supplies to their customers. The manufacturing plant at Angle Park rely on gantry cranes in their operations on a day to day basis. The existing cranes have been in continuous service for many years, these cranes have reached the end of their design life. As a result it

has been decided to replace these cranes with new units. Therefore the time for replacement of these cranes became crucial. First we had to replace the crab units and install them on existing cranes then transfer them to the new gantry cranes as soon as they were ready. Eilbeck were able to accommodate the client's urgent need and supply the first two 20t crabs in 6 weeks to ensure the plant did not waste production time.



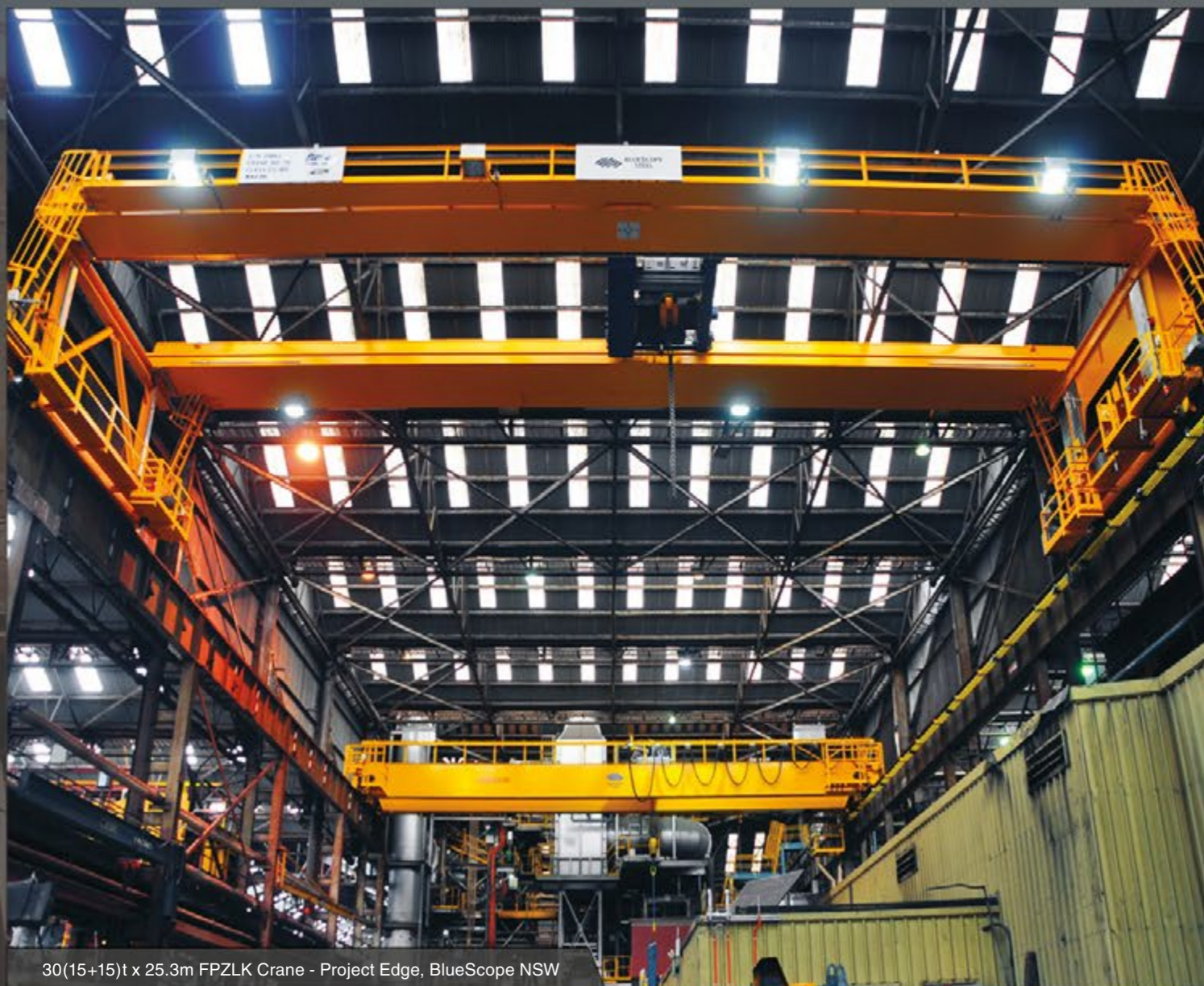
15t x 13.3m SPELK Cranes - Rio Tinto Alcan QLD

Eilbeck Cranes, Mackay have successfully supplied 2 off 15t single girder semi portal cranes to Rio Tinto Alcan situated in the Yarwun area, 10km north-west of Gladstone in central Queensland. These cranes have a span of 13.35m between portal supports and upper rail structure with an additional 4.5m cantilever out behind the portal supports. Suspended maintenance platforms are equipped with all weather roof and gutter plumbing structure provides protection to

workers underneath from the elements. Each crane is installed in the Digestion Feed area unit used for general maintenance of WIRTH pumps. These cranes are far from standard off-the-shelf items with complex modifications and design including special zoning speed requirement feature and specially programmed VSD long travel operation. The fulfilment of these has been carried out by Eilbeck in collaboration with STAHL.



50t x 28m FPZLK (left) and 25t x 28m FPELK (right) - Georgiou Precast, Hazelmere Workshop WA



30(15+15)t x 25.3m FPZLK Crane - Project Edge, BlueScope NSW

Project Edge – the client urgently required to make significant modifications appropriate to producing a new product of high commercial value for future profitable operations. Crane 76 was specifically designed to be the only crane (out of total 4 in the production) that could successfully travel the entire length of production. This in turn impacted the uptime or dependability of Crane 76, it also meant that the crane, from a mechanical perspective, was quite unique within its capacity to travel on existing long travel rails but also have a main girder which could reach over the top of the Project Edge machinery that could also travel below existing roof trusses - about 50-75mm maximum clearance above and below. With this came the challenge of accurately traveling the production hall in a non skewed motion without impacting side loads onto the older rails. By using laser positioning, we were able to effectively control the long travel motion with less than 10mm error over a 25 meter span. All in real time, millisecond scan rate error correction.

The trolley & hook positions needed to be both very wide in cross travel and also approach the top hook block to distances much shorter than your average crane. Encoder feedback on these motions allowed Crane 76 to reduce speeds automatically and creep the hook into the required positions. To install and test a crane such as No 76,

with ambient temperature reaching 70°C, inside a preexisting building which is saturated with 3 production lines and requires roof sections from multiple adjoining buildings to be removed is very difficult but, with Bluescope's Install Team and Eilbeck's Commissioning Team working together closely and cooperatively the job was done seamlessly. Whilst the control system was proven at Eilbeck's Moorlands workshop, the real test came when the crane was expected to travel the client's production and complete all tasks and motions without issues. With production line running and Project Edge also being in construction Eilbeck Cranes worked in with the site teams and fully tested the crane to meet all requirements. Owing to our 'Can Do' attitude, we were able to add some additional features and benefits that the client observed he required during the test phase.

The project had to be delivered in weeks not months. Eilbeck Cranes is well suited to this short lead time delivery, with systems, processes and multiple fabrication facilities to bring all components and the complete machine in on time.

Eilbeck found itself standing alone amongst billion dollar multinationals who did not have the passion or courage to take on such high risk work. Not only was our offer the most competitive one but also no other supplier was able to guarantee the job.

“Highly Versatile, Extremely Reliable With Tonnes of Unique Features”

Complex factory configurations pose special problems, but they are easy to solve with underslung travelling cranes.

The crane track is mounted directly on the factory ceiling and not on free standing structural or building columns, allowing efficient material handling solutions even in tight spaces with difficult design conditions. With minimum side approach dimension and cantilevers to suit individual conditions, underslung travelling cranes make full use

of the space available. The highest hook position can also be raised by installing the main girder up between the end carriages.

These cranes are designed for load capacities up to 8t and spans up to 25m.

DLVM and EDL travelling cranes are equipped with rolled section girders while EDK cranes feature torsionally rigid welded box girders. A full range of accessories are available.



12.5t x 10.4m EDL Special Crane - SNC Grande Cote, Senegal



10 off VW 2t x 4.5m reach Jib Cranes - Hitachi Construction Machinery, Wacol Development Project QLD

One of Australia's leading providers of products and services for mining, construction and earthmoving industry needs, HITACHI Construction Machinery, has opened its new multi-million dollar state of the art facility in Wacol, Brisbane. With an investment of over \$80 million upon completion, this world-class facility launches the company's support capabilities to a new level. Part of this investment is the installation of six new high class Eilbeck Overhead Travelling Cranes of various spans and capacities in their new facility and ten wall mounted jib cranes, all with 2t capacities. These overhead gantry

cranes are comprised of 2 off 80/10t double girder type with 2.5m span, 2 off 20/5t double girder with 28m span and 1 off 5t single girder type having 5.74m span respectively. Each of these cranes is manufactured with high class quality at Eilbeck Cranes Mackay facility. With the German made ABUS hoists and electrics key to the cranes operation, the cranes are also designed with features such as dual hoisting, load displays, anti collision systems and master slave control systems to name a few, all to suit Hitachi's needs and to keep their operations moving along with continued convenience and efficiency.



0.75t x 3.5m radius VS Jib Crane - BHP Billiton, Yandi III Project WA

Jib cranes are the ideal solution for versatile material handling in almost all sectors of commerce and industry. Wall or pillar jib cranes, available with wire rope or chain hoists, can easily be adapted to any specific requirements. In addition, the range includes a variety of mounting systems for floors, walls or existing pillars, allowing these cranes to be integrated harmoniously into almost any material flow system. Options such as electric trolleys and slewing mechanisms offer even greater versatility in the workplace.

Jib cranes can be individually tailored - from the type of mounting or hoist to optional configurations for particular requirements all produced to high levels of quality. With the touch of a button, they can handle loads precisely and effortlessly, whether mounted on their own pillars or on walls or columns. For loading machines, changing heavy tools or lifting workpieces onto tables for processing - with jib cranes, the lifting is easier, more efficient and safer. Eilbeck will manufacture any type of a jib crane according to client's specifications.



6t x 6.25m radius VS Jib Crane - Thyssen Krupp, Lihir Gold PNG, Papua New Guinea



0.5t x 3m radius LSX jib cranes in transport to Gemco Rail - Forrestfields WA



10t x 5.5m radius VS Jib Crane - BHP Billiton, Yandi Rapid Growth Project 5 WA

On the extension of the existing ore handling facilities of Yandi in the Pilbara WA, Eilbeck Cranes has supplied a 10t jib crane for the fixed plant with the purpose to lift miscellaneous maintainable items, materials, tools and equipment. The crane was designed with special

consideration due to the capacity for this type of crane and being suitable for outdoors/indoors operation in hot, dusty and humid environment. Eilbeck flexibility and ability to provide customised solutions makes us preferred by the mining industry.



1t x 5.5m radius VS jib crane with chain hoist - Cadia East Project NSW



“Eilbeck Cranes have a long history with Tunnel Boring projects Australia wide”

2x160t spreader beams working in tandem - Thiess John Holland, Airport Link Project QLD



38t x 16m ZLK crane with coil tong attachment of MRC 35t - Energy Australia Depot Facility, Homebush NSW



65t x 360° rotating beam for paper roll handling - Amcor B9 NSW



150t lifting beam on the 120/25t crusher - Boddington Mine WA

The Danger Points

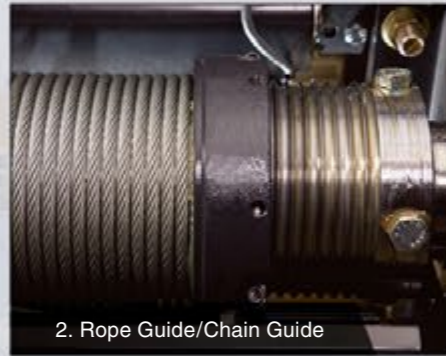
In lifting, drive and control technology both electrical and non-electrical components and parts can trigger an explosion. Eilbeck Cranes offers apparatus specially designed for use in areas subject to gas or dust explosion hazard.

Most Ex hoists and components come from our German partner STAHL, from motor and brake to controls and switchgear, and meet the latest European (ATEX) and international (IECEx) construction and safety regulations for potentially explosive atmospheres.



1. Wheels

Brass wheels for higher speeds.



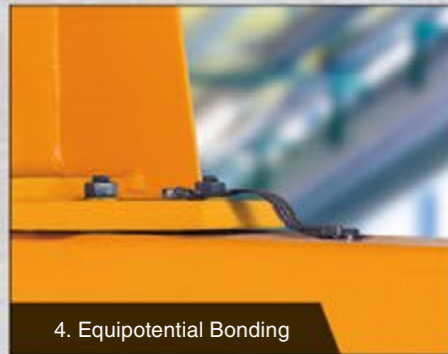
2. Rope Guide/Chain Guide

Wear-resistant rope guide is extremely durable and not subject to temperature limitations.



3. Gear

The types of protection of all gears are constructional safety "c". Protective liquid/oil prevents sparks.



4. Equipotential Bonding

Equipotential bonding is essential for avoiding incendive sparks.



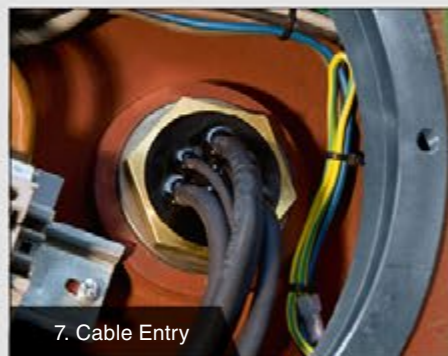
5. Overload Device

The overload devices for Zones 1, 21, 2 and 22.



6. Panel Box

Flameproof enclosures increase safety and protection against explosions.



7. Cable Entry

Indirect cable entry, very high safety level. Connection of the Ex e connection box to Ex d by post-type bushing.



8. Motors

Motors made of grey cast iron and IP 66 rated, the type of protection combines flameproof enclosure, increased safety and protection by housing.



9. Control Pendant

Housing protection IP 66. Flameproof enclosure.



10. Limit Switch

Flameproof enclosure.



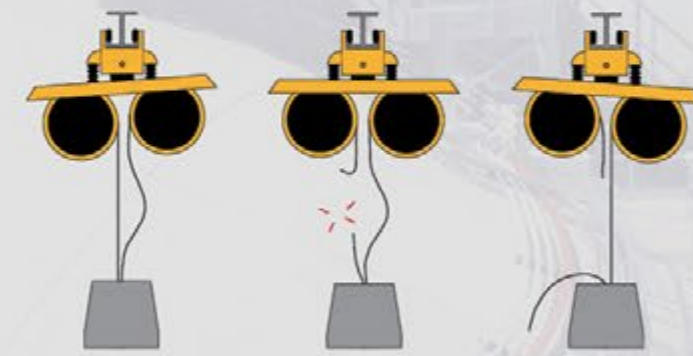
11. Bottom Hook

Bronze-coated for high speed applications, no aluminium used.

LIQUEFIED NATURAL GAS SOLUTION - THE TANK HOIST

As the partner of the World's leader in Ex-proof crane technology STAHL, a vast majority of LNG hoists we implement come from German STAHL CraneSystems. These components have been designed especially for maintenance work in natural gas liquefaction plants (LNG). Thanks to their high-quality components and robust design they are ideal for use near the coast in challenging climate conditions. Equipped with two rope drums, two ropes, two gears and two motors, they are explosion-protected and certified in

compliance with the strict ATEX directives and IECEx regulations. As all safety relevant components are doubled up, the hoisting procedure can continue without disruption even if a rope should break. Only one rope acts as hoisting rope when lifting the pump. The second hoist runs alongside with a dead rope as backup. If the load rope should break during the hoisting procedure, the second wire rope hoist carries on hoisting. The shock-absorbing rocking suspension of the hoist cushions the impact of the abrupt load change.

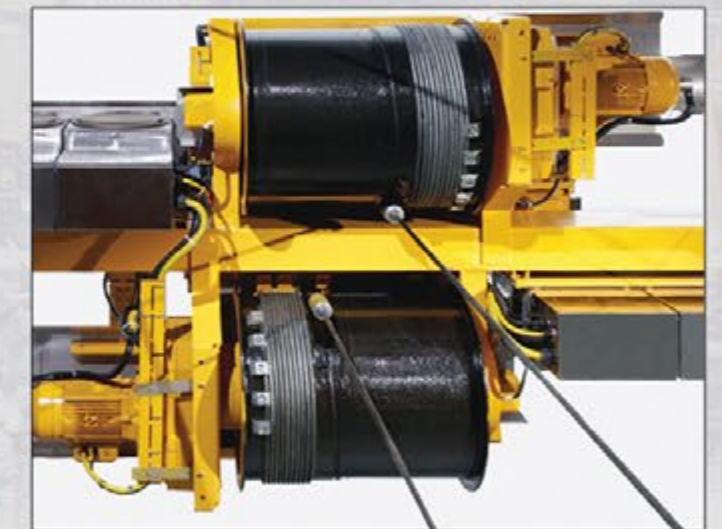


Normal operation with 1/1 reeving

Accident! The rope breaks

Normal operation with second hoist unit

Maximum safety level 3B: normal operation even after rope breakage



Thanks to their redundant design and rocking suspension, STAHL CraneSystems' LNG wire rope hoists are regarded as the safest hoists presently available on the market.



“We draw on our Profound Experience and Knowledge in the Ex-proof Area of Expertise to Ensure a Quality Product”

Eilbeck Cranes are a partner of Stahl CraneSystem GmbH, world leader for the supply of components for cranes used in classified areas in the Oil & Gas and Marine industries, for Ex Cranes and international projects with Ex cranes. Eilbeck Cranes has embraced the embodiment of perfection in lifting and crane technology all over the world for many years. Compact, high-performing and particularly

maintenance friendly. Users, crane manufacturers and system manufacturers appreciate the modular system based on field-proven, low-maintenance components. Series manufacture of the standard components means economic advantages for you. And this combined with precise manufacture of off-standard components makes the SH wire rope hoist a widely acknowledged top quality product.

Tank jib cranes mounted on top of LNG and propane tanks - Entrepouse, France. Designed considering 30 years in coastal environment conditions

The modular system permits practically unlimited combinations of the sub-assemblies to produce your individual solutions. The SH series from STAHL CraneSystems is available for the load capacity range from 500kg to 25,000kg in five frame sizes with 26 load capacity variants.

The wire rope hoists can be used as stationary models or together with a trolley or crab in standard cranes, off-standard cranes or systems manufacture. If your requirements are exceptional, the experts in our engineering department will develop customised solutions tailored to them.



7.6t x 15m Box Type Jib Cranes - Entrepose Contracting, New LNG Train Skikda, Algeria



Jib Crane MRC 5100daN - Entrepose Contracting, New LNG Train Skikda, Algeria



4t x 6.3m ELK crane - Fluor Australia Pty Ltd. GLNG Upstream Project QLD



Ex-proof Zone 2 rated Stahl hoist

**“Our Custom Designed Cranes
Lift More and Move Faster”**



80/15t Luffing Jib Crane - Karara Mining, Karara Iron Ore Project

Eilbeck Cranes successfully completes delivery of 26 off overhead cranes and numerous wire rope and chain hoists to Karara Iron Project. It has been a partnering venture with Worley Parson since conception of the project, through the design until final award, with delivery of the cranes being over the passed 12 months. One interesting crane was the primary crusher 80/15t x 10.5 (16.5)m reach hydraulic luffing crane which was fully assembled and no load commissioned at Eilbeck's new testing and assemble facility in Yelland Way Bassendean Perth, purpose built to support the mining companies.

- Crane Capacity: 80000kg @ 10.5m 15000kg @ 16.5m
- Lifting Speed Main: 0.0-4 m/min Full Load
- Rotation Speed: 0.06-0.5 rpm
- Crane Classification: M4 to AS1418.1-2002
- Hoist Group Class Main: M4
- Supply Voltage: 415 VAC 50Hz
- Crane Demand Power: 110kW
- Ambient Temperature: -4 to 48°C
- Design Life - Structural: 25 Years
- Design Life - Mechanical: 10 Years



Crane Control Panel



LNG Tank Pump Platform - LNG Tank Jib Crane.

Classification M4 to AS1418.1-2002

Boom Length: 18.3m

Crane Capacity:

MRC MAX			9.3t
Main Winch	MRC @ 82°	R3.1m	9.3t
Main Winch	MRC @ 53°	R11.5m	9.3t
Main Winch	MRC @ 0°	R18.3m	2.65t
Aux Winch	MRC @	R12m	5.6t



9/6t LNG Tank Jib Crane - CBI Constructors, Gorgon LNG Project

“Our Cranes are Built Tough and have passed the harshest of Tests”

Our custom designed cranes lift more and move faster.

Eilbeck Cranes is the leading Australian crane manufacturer, offering customers tailor made solutions for efficient material handling and individual service from design through to service and maintenance. Throughout its century long history Eilbeck Cranes has been ensuring high quality and precision right down to the smallest component.

The wide range of accessories available means that Eilbeck Cranes are ideally suited for special applications. We are highly versatile and extremely reliable and have a number of features which by no means all manufacturers offer as standard equipment. Whether you need lifting, lowering, linear handling or area coverage, Eilbeck Cranes help you keep everything under control.



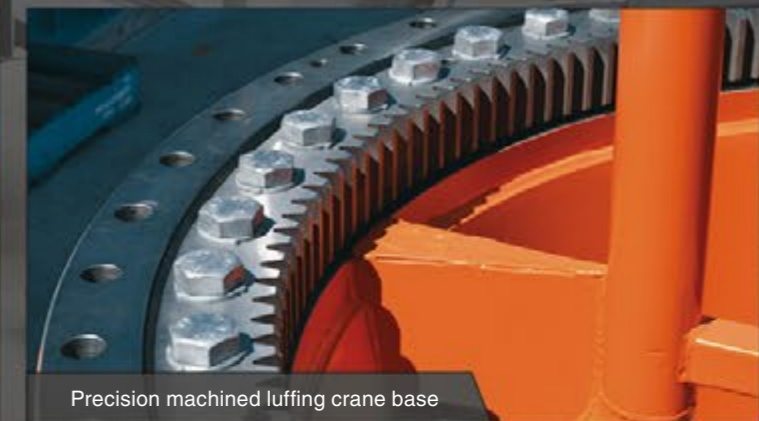
Simultaneous welding of all the four seams



Eilbeck's innovation of newly designed spliced joint allowing wider transporting possibilities



Full automation of welding crane girders



Precision machined luffing crane base



Non-destructive testing



Transporting ELK 24m span crane - IPLEX Pipelines, Toowoomba



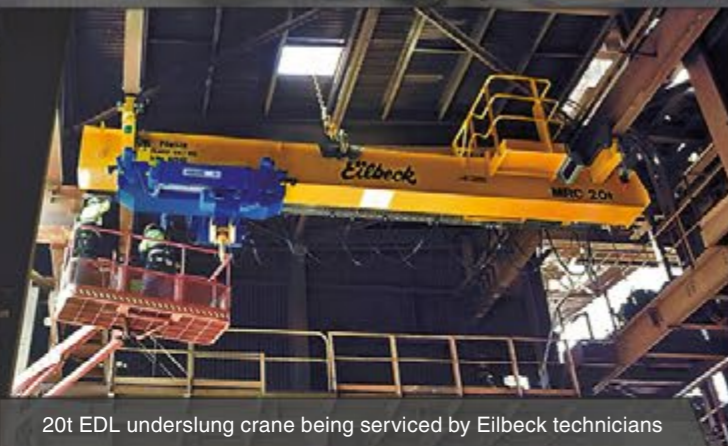
Transporting a 32m girder - Moonlighting Investments



transporting 80t luffing crane - Karara Mine



In Action - Transporting 44m long girder of a Full Portal ZLK Crane



20t EDL underslung crane being serviced by Eilbeck technicians



45t x 45m FPZLK crane - FMG Cloudbreak, WA



Rio Tinto, Paraburdoo WA - decommissioning



and installation of the 80/16t x 34.1m FPZLK primary crusher crane

One Company, Many Locations

Besides being the leader of the Australian Market, Eilbeck Cranes exports around the globe from its modern Australian manufacturing bases in Perth, Sydney and Mackay. Complementing its in-house specialist crane design and manufacturing skills, Eilbeck is a leading agent for German crane company ABUS.

It has been the sole distributor for ABUS for over 24 years in Australia, New Zealand and Vietnam. As the Ex. Cranes partner of Stahl Crane Systems, Eilbeck Cranes offers specialist capabilities in explosion-proof and spark-proof cranes.

Service You Can Rely On

Working for a leading crane manufacturer and seeing cranes built from the ground up, Eilbeck Cranes' service technicians have unique insights into cranes' electrical and mechanical operations.

On-call 24 hours a day, Eilbeck technicians are proficient and well-experienced in the operation and maintenance of Eilbeck and other major brand cranes. The service team has access to parts for all cranes, maintaining more than 2,000 cranes of various brands.

Eilbeck Cranes' comprehensive service expertise ensures cranes under its care perform over the long haul with downtime minimised. Regular preventative maintenance allows any problems to be addressed in advance, rather than equipment being out of action during peak production periods.

Extra Support

To optimise crane performance, Eilbeck Cranes offers a variety of other services:

- **Availability & cost tracking reports**
An invaluable management tool, these reports also help identify where to invest to increase productivity and lower costs.
- **On-location crane operator training**
To reduce operator error and improve safety, this certified 4-6 hour training includes theoretical and practical components.
- **Modernisation service**
Eilbeck Cranes can enhance all makes of crane with the latest technology – for clients who want to lift more, move faster or are experiencing other operational limitations with their existing cranes.

Mandatory Inspections

Did you know?

- Mechanical components of any crane – generally moving parts like gearboxes, sheaves, rope drums and braking systems – have a 10-year design life.
- Structural items like beams and bolts have a 25-year design life.
- Workplace Health & Safety Legislation and AS1418 and AS2550 specify mandatory major inspections at 10 years for mechanical components and 25 years for structural components.

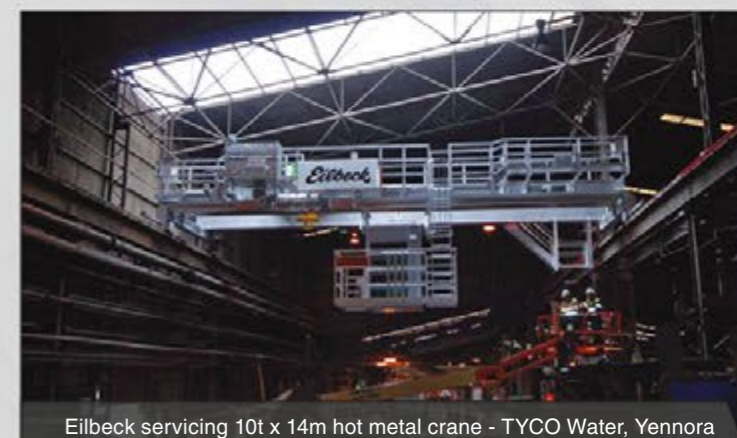
Eilbeck Cranes has a team of engineers and technicians dedicated to mandatory inspections and overhauls. This team can work with your staff to customise the major inspection process and ensure compliance with statutory requirements.

For ABUS cranes, Eilbeck uses the ABUS 10 Year Kit to ensure key wearing components are replaced and supplied new from the original crane manufacturer. This results in minimal down time and a guaranteed 10 year further life.

Excellence in Quality and Safety

A key contributor to Eilbeck Cranes' success is its commitment to quality and safety in all the company does. Eilbeck Cranes is accredited to International Quality Standards ISO 9001 and Australian Safety Standards AS14001 through accreditation provider Bureau Veritas.

This long-term association – with regular audits by internal and external parties – has allowed Eilbeck management to learn from advice and audit findings, allowing the company's Quality Management System to evolve to the first class level it is today.



Eilbeck servicing 10t x 14m hot metal crane - TYCO Water, Yennora





Eilbeck Cranes - Australia
ABN: 22 295 128 214 ACN: 008 973 662
T.Eilbeck & Son Pty Ltd T/F The Eilbeck Unit Trust
www.eilbeckcranes.com

Perth – Manufacturing

28 Jackson Street
Bassendean, WA 6054
Phone: 61 (08) 9279 4800
Fax: 61 (08) 9378 3689
Email: perth@eilbeckcranes.com

Perth – Manufacturing

11 Yelland Way
Bassendean, WA 6054
Phone: 61 (08) 9379 3724
Fax: 61 (08) 9378 3689
Email: perth@eilbeckcranes.com

Perth – Service / Testing

14 Yelland Way
Bassendean, WA 6054
Phone: 61 (08) 9379 3724
Fax: 61 (08) 9378 3689
Email: perthservice@eilbeckcranes.com

Tom Price – Service

Lot 27b Mine Road
Tom Price, WA 6751
Phone: 61 (08) 9279 4800
Fax: 61 (08) 9378 3689
Email: tomprice@eilbeckcranes.com

Karratha – Service

Unit 3 / 4 Crane Circle
Karratha, WA 6714
Phone: 0407 208 025
Fax: 61 (08) 9185 4801
Email: karratha@eilbeckcranes.com

Darwin – Service

Phone: 61 (07) 3376 8255
Fax: 61 (07) 3376 1255
Email: darwin@eilbeckcranes.com

Sydney – Manufacturing

6 Moorlands Road
Ingleburn, NSW 2565
Phone: 61 (02) 9829 3700
Fax: 61 (02) 9829 3500
Email: sydney@eilbeckcranes.com

Sydney – Service / Winches / Machining

53 Lancaster Street
Ingleburn, NSW 2565
Phone: 61 (02) 9618 1904
Fax: 61 (02) 9605 5171
Email: sydneyservice@eilbeckcranes.com

Newcastle – Service

1 / 50 Sandringham Ave
Thornton, NSW 2322
Phone: 61 (02) 4966 8022
Fax: 61 (02) 4964 2285
Email: newcastle@eilbeckcranes.com

Mackay – Manufacturing / Service

32 Diesel Drive
Paget, QLD 4740
Phone: 61 (07) 4998 5599
Fax: 61 (07) 4998 5756
Email: mackay@eilbeckcranes.com

Brisbane – Service

Unit 3 / 12 Sudbury Street
Darra, QLD 4076
Phone: 61 (07) 3376 8255
Fax: 61 (07) 3376 1255
Email: brisbane@eilbeckcranes.com

Melbourne – Service

Unit 3A / 1 Leo Court
Derrimut, VIC 3030
Phone: 61 (03) 8353 2444
Fax: 61 (03) 8353 2456
Email: melbourne@eilbeckcranes.com

Adelaide – Service

Unit 3 / 132-134 Port Wakefield Rd
Cavan, SA 5094
Ph: 61 (08) 8162 5150
Fax: 61 (08) 8162 5160
Email: adelaide@eilbeckcranes.com

New Zealand – Baker Cranes

www.bakercranes.co.nz
10 Aerovista Place
Wiri Auckland 2150
Phone: 64 (9) 277 0736
Fax: 64 (9) 277 0735
Email: newzealand@eilbeckcranes.com

Netherlands – Van Leusden B.V.

Parelhoenweg 2
NL - 4791 PA Klundert
Havennummer 457A
The Netherlands
Phone: 31 168 385 225
Fax: 31 168 385 230
Email: info@vanleusden.com

Vietnam – AVC

206 Road Lac Hong Commune
Van Lam District
Hung Yen Province Hanoi
Vietnam
Phone: 84 321 3980 410
Fax: 84 321 3980 411
Email: vietnam@eilbeckcranes.com

ISO 9001

BUREAU VERITAS
Certification



AS 4801

BUREAU VERITAS
Certification

